

20
24



IMPACT REPORT
West Michigan Construction Institute





Note from Our Board Chair

Tony Roussey | EV Construction

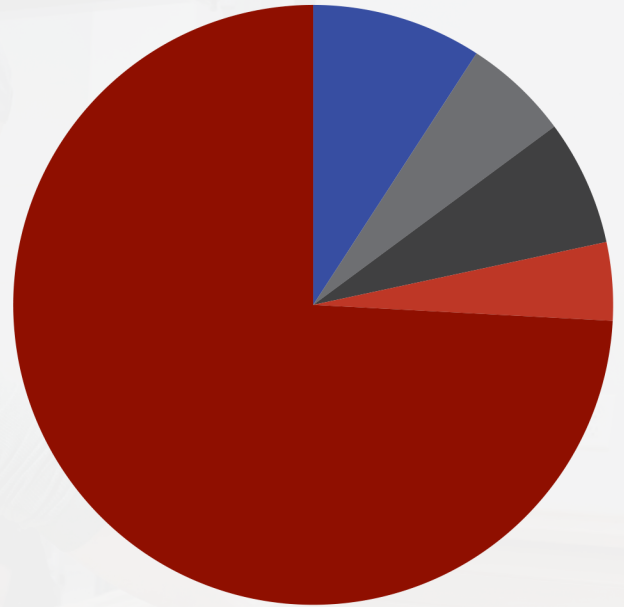
Reflecting on the past year, I am pleased to present our 2024 annual report. Despite opening just two short years ago, the West Michigan Construction Institute's growth is remarkable. Our mission to strengthen communities through construction trades education is seeing tangible results. Since our inception, our high school program enrollments have tripled, our adult craft training offerings have expanded, and our professional development courses have broadened.

Looking ahead, we're expanding our high school program to include the electrical trade. Additionally, we're adding an adult craft training drywall program and deepening partnerships with institutions like Kent Intermediate School District and Grand Rapids Community College. This success reflects our board's vision: to equip the next generation for lifelong construction careers. Together, let's continue building a future where opportunities flourish, and communities thrive.

Financials

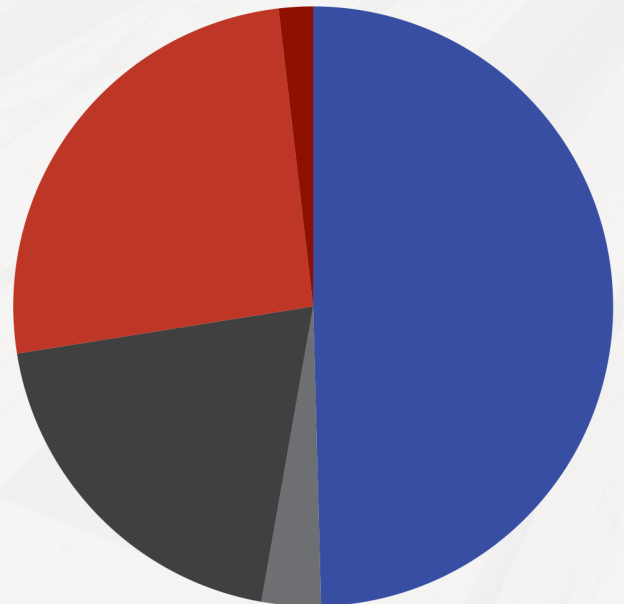
SOURCES

- Donors \$111,132
- Corporate Partners \$82,000
- Grants & Contracts \$50,543
- Construction Rally & Events \$68,855
- Program Revenue & Training \$897,844



USES

- Staff \$591,647
- Events \$22,024
- Administration \$305,868
- Tools & Materials \$37,911
- Programs & Training \$235,374





Our Students

Adult Craft Training

Hundreds of regional construction firms came together to develop the facility, identify the programs, provide materials and equipment, and enhance the classroom and lab experience through their employees and subject matter experts; who bring the construction world into our facility through relevant instruction. Our craft training program uses the National Center for Construction Education and Research (NCCER) curriculum, which is approved by the Department of Labor.

STUDENT NUMBERS

- Carpentry 25
- Concrete 14
- Plumbing 33
- Sprinkler Fitting 20

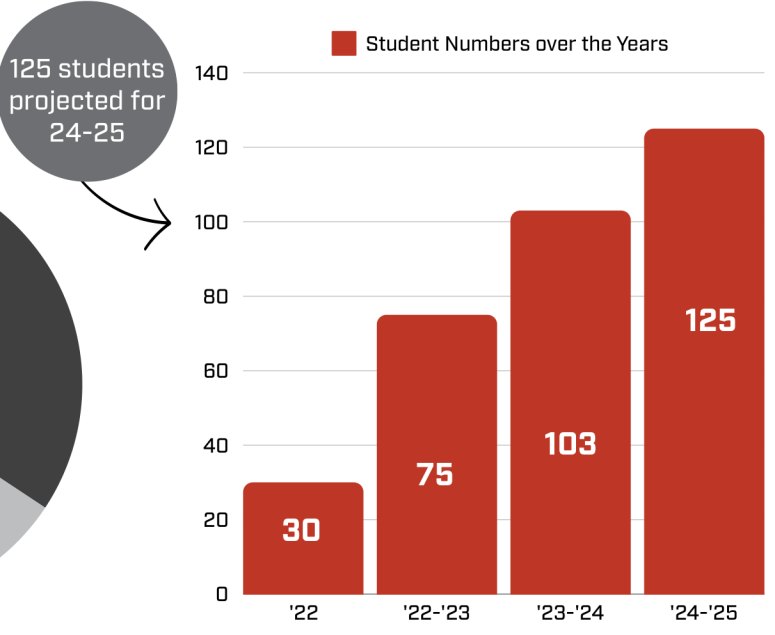


63
Adult students earn Core or Level I Credentials in 2023-2024.

13
New to the industry students joined our student body in Fall 2023.

10
New instructors added to the WMCi instructional team from the industry.

3
New trades and courses offered for craft students in 2023-2024.





Our Students

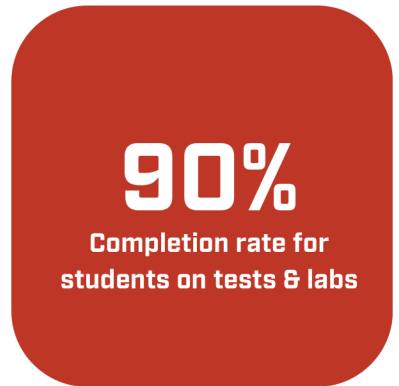
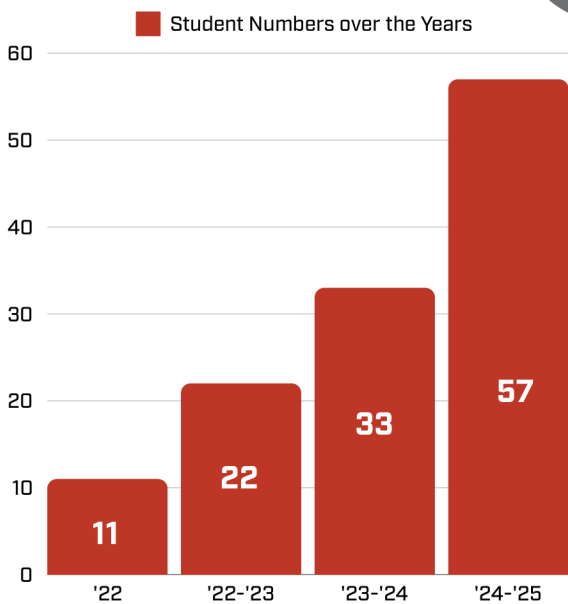
High School CTE Program

“This year I’ve appreciated having such a diverse group of instructors. Learning a bunch of different outlooks and approaches to how they’re successful in the trades. They have been great role models. It’s made me feel a lot more confident to get out there and not be shy. It built character in addition to building things.”

Ben | Jenison High School

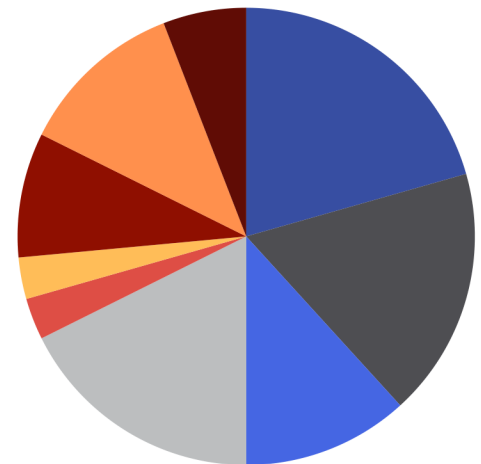
High School Enrollment Numbers

57 students projected for 24-25



School Districts '23-'24

- Grand Rapids Public Schools 7
- Comstock Park 6
- Hudsonville 4
- Jenison 6
- Lowell 1
- Homeschool 1
- Kelloggsville 3
- Northview 4
- Wyoming 2





Note from Our Donor

Kyle Pung | Pleune Service Company

What really attracted me to WMCI is that their mission and their “product”, so to speak, is tangible, holistic and serves the community in a variety of ways. WMCI is the result of years of hard work, foresight and the cooperation of the West Michigan building community. WMCI connects people who want quality job-opportunities with the education and in-demand skills that are required. You can watch the students progress and gain meaningful employment that provides them, and often their families, with greater opportunities that lead to greater independence. I have been a individual and corporate donor with WMCI since 2021.

WMCI is the result of years of hard work, foresight and the cooperation of the West Michigan building community. Without the community, WMCI never would have gotten off the ground, and without the community it would have been able to thrive to the point of already building out. WMCI would not be able to have the Summer Camps, the Construction Rally or community awareness and appreciation events. Without community involvement, an untold number of potential students would never get the opportunity to learn these skills [at least not in our region through a merit shop] and an untold number of current students would have significantly more limited future opportunities.

Philanthropy

DONORS

New 37

Current 89

Recaptured 22

Recurring 3

Corporate Partners 18

Make a tax-deductible donation today!

To join us in supporting our students, scan the code below with your phone or visits wmcinstitute.com/support/ for safe and secure online giving.

Scan here to support our students & programs!





Note from Our President

Jen Schottke | West Michigan Construction Institute

In January 2022, we transformed Owen-Ames-Kimball’s warehouse into the West Michigan Construction Institute, opening with 7 classrooms and 2 labs. Just two years later, we’re expanding with 2 more labs and classrooms, thanks to the support of West Michigan’s commercial construction industry and visionary funders like the MEDC and Kent County.

Over this time, our impact has been profound: tripling high school enrollment, expanding adult craft training, and broadening professional development. Looking ahead, our growth trajectory remains strong.

At WMCI, we’re more than just a training center; we’re a hub of connection, where students forge both practical skills and lasting relationships with potential employers. It’s with pride that we see WMCI alumni making their mark on our community. The increasing interest in construction education among our next generation fills me with optimism for our industry.

A personal thank you to WMCI’s visionary board of directors and our exceptional staff who are propelling our growth.

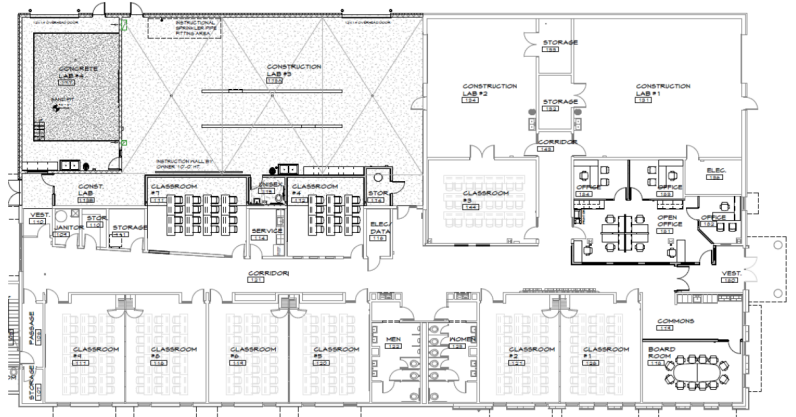
Yours for our industry,
Jen



Rendering by Dan Vos Construction

“Our students are the future of our workforce, and this expansion is all about them and all for them.”

-Jen Schottke | President



West Michigan Construction Institute

801 Century Ave SW
Grand Rapids, MI 49503
(616)208-9624
www.wmwcinstitute.com

**FALL 2024 COURSES NOW
AVAILABLE!**
SIGN UP FOR CLASSES AT
WWW.WMCINSTITUTE.COM



Thank you to our supporters

Board of Directors 2023-2024

Tony Roussey
John DeBlaay

Mark Thomas
Tim Koster

Matt Fennema
Steve Longstreet

Bev Thiel
Ruben Ramos

Brian Potter
Greg George

Corporate Partners 2023-2024

ABC Western Michigan
Allied Mechanical Service
Architectural Metals Inc.
Bouma Corporation
Brigade Fire Protection
Buist Electric

Buist Sheet Metal
Construction Simplified
Dan Vos Construction
EV Construction
FCC
HighPoint Electric

Owen-Ames-Kimball
Phoenix Interiors
Pioneer Construction
Total Fire Protection
Veneklasen Construction
Wolverine Building Group